

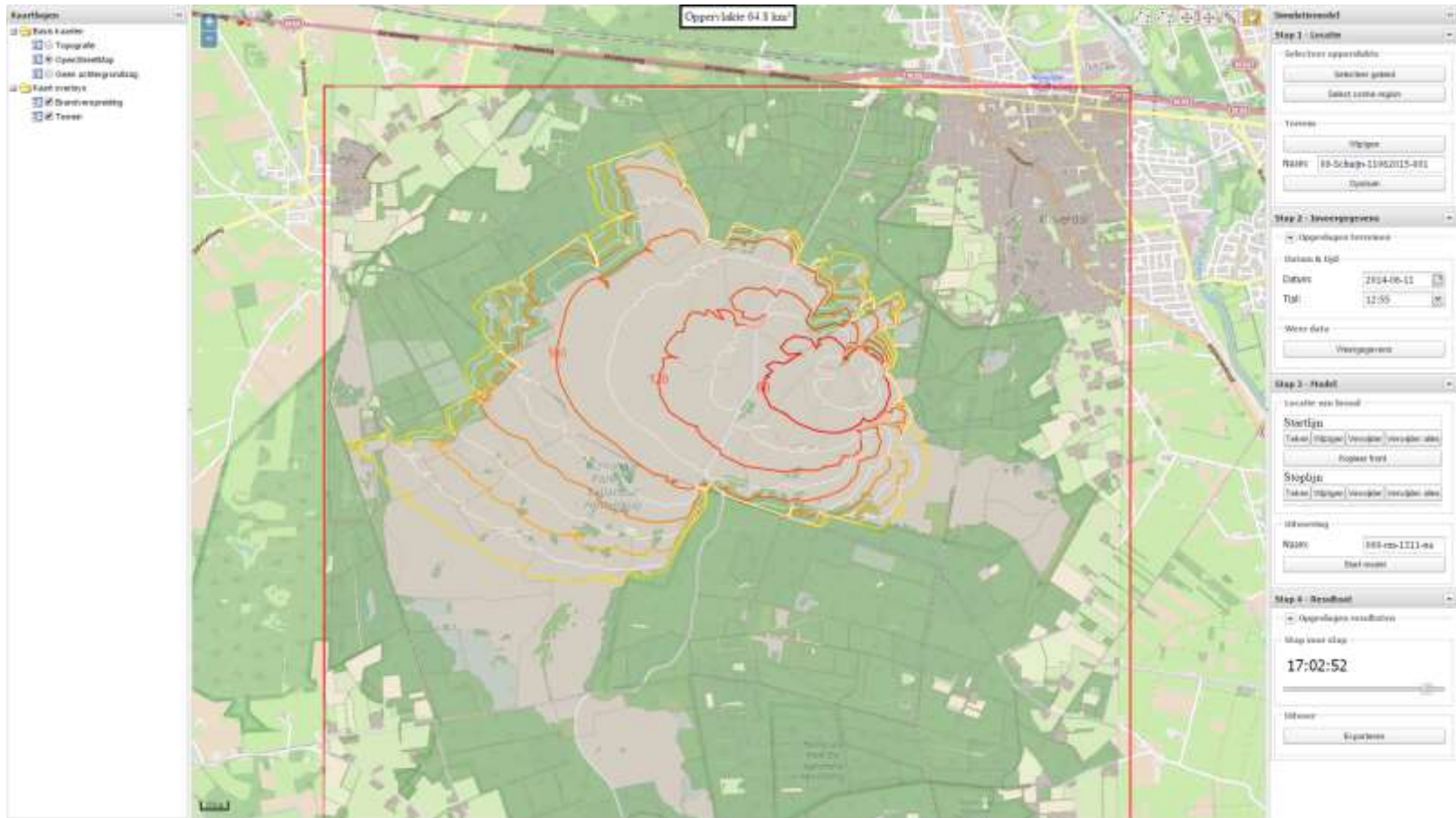
Remote sensing and a wildfire spreadmodel

Before, during and after a wildfire

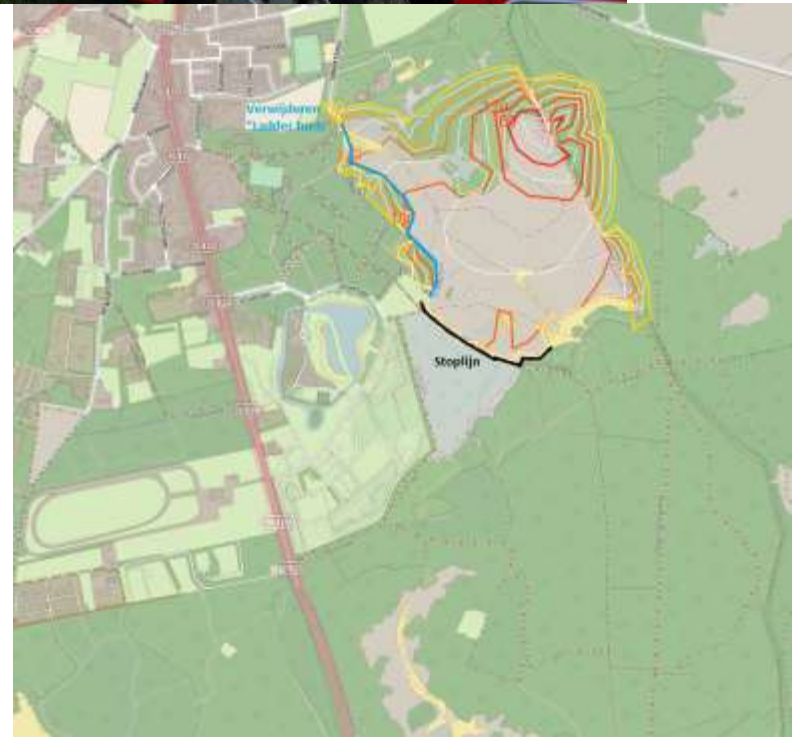
10 November 2015
Glasgow

Ester Willemsen
Jan Slakhorst
Nienke Brouwer

Wildfire spreadmodel



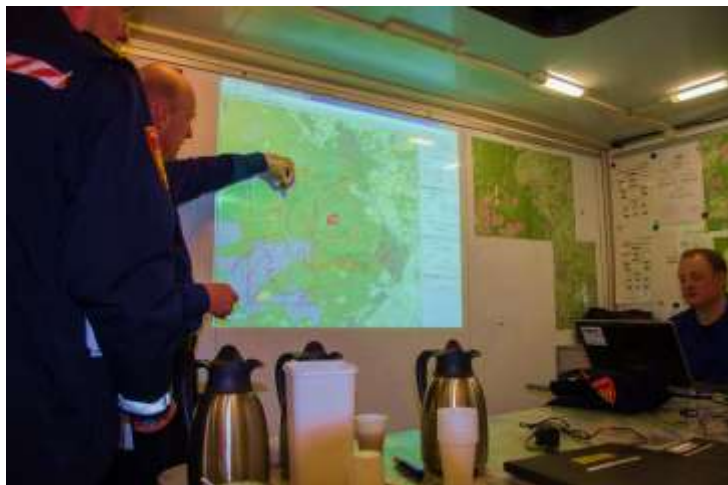
Wildfire prevention measures



During and after a wildfire



during



after



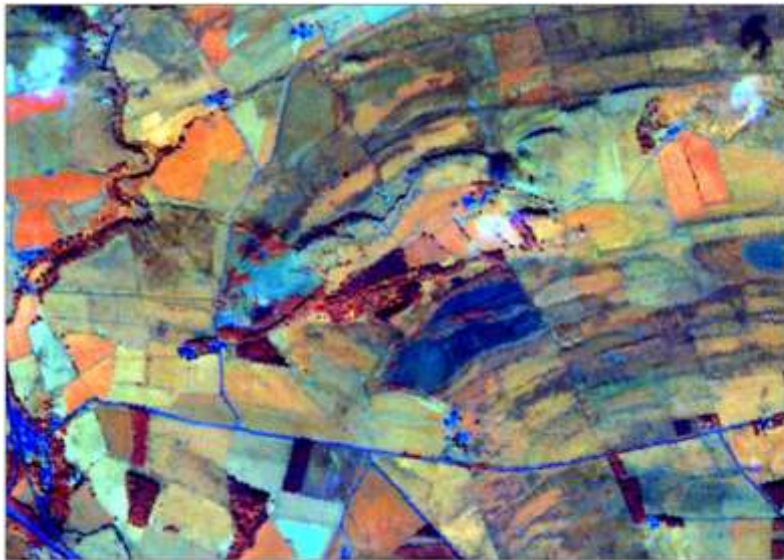
Photoguides

fieldwork



Satellite data

- ▶ A generic, more detailed and up-to-date map gained by using remote sensing
- ▶ Ministry of Safety and Netherlands Space Office

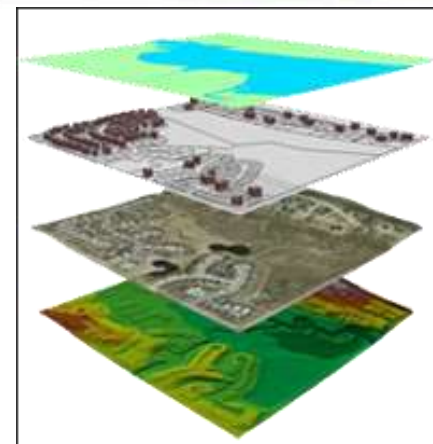
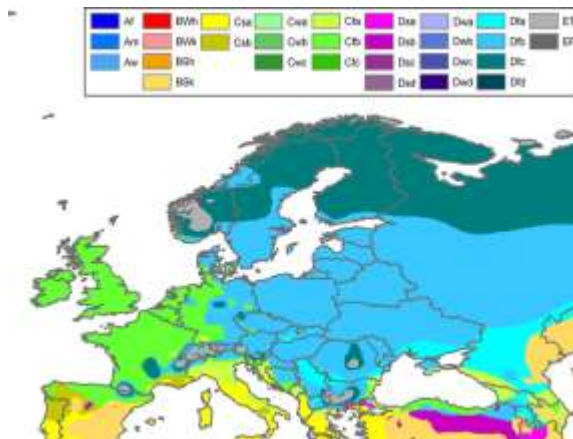
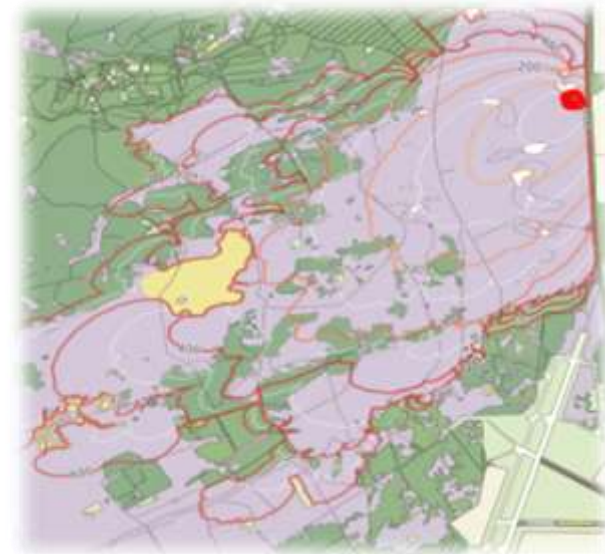


Rapid Eye 140723



Remote sensing and a spreadmodel

- ▶ Innovation
- ▶ Climate zone
- ▶ Fuel models
- ▶ Integration



For more information

- ▶ Ester Willemsen; projectmanager
- ▶ Jan Slakhorst; technical advisor
- ▶ Nienke Brouwer; researcher



Contact: wildfires@ifv.nl