

# National Operational Guidance Programme

---

## Wildfire Conference 2015



**CFOA**  
Chief Fire Officers  
Association



# National Operational Guidance Programme



## **Wildfires**

Alex Bennett

Project executive

# ‘Wildfire Operational Guidance Document’ versus ‘Wildfire NOG’

- The Scottish Government document was a key source of information when developing the Wildfires NOG
- Wildfires NOG is a refresh but not a total rewrite – the two documents will be compatible
- Wildfires NOG is UK-wide guidance, which should demonstrate to all fire and rescue services:
  - The importance of assessing and examining risks within their area
  - The need to review and/or update their operational policies and procedures for wildfire incidents

# 'Working with other responders

- The guidance acknowledges the involvement of land management agencies and other rural sector stakeholders
- Planning and preparation with other responders is key
- The local knowledge and assistance provided by these groups is vital when fire and rescue services respond to wildfires



# National Operational Guidance Programme

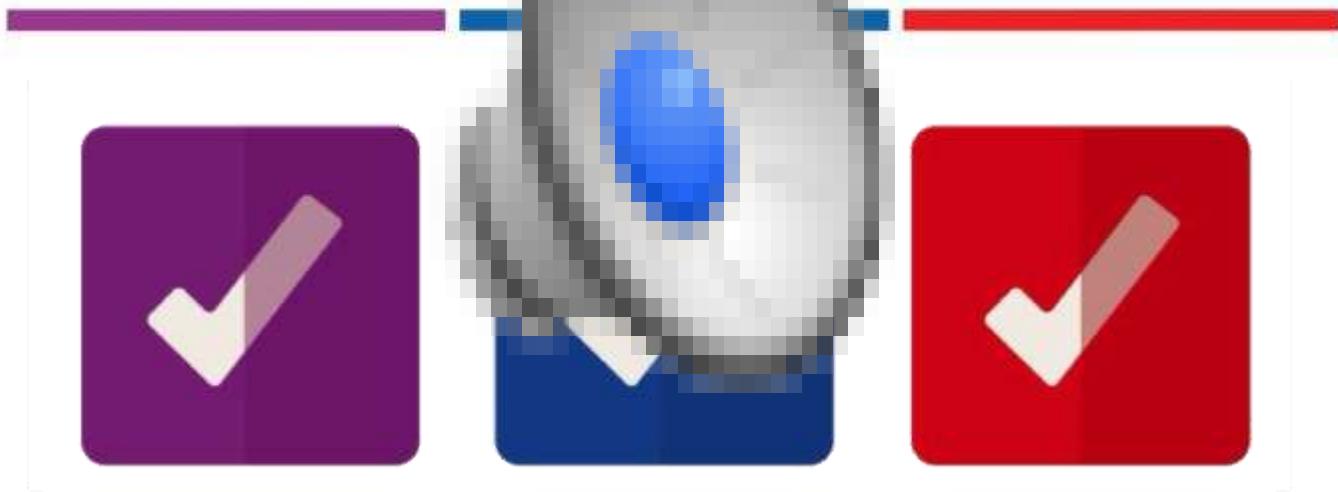


## **NOG Overview**

Janet Guthrie

Project manager

# National Operational Guidance Programme



National Operational Guidance Video

# The Programme

To provide an online catalogue of fire service guidance which is:

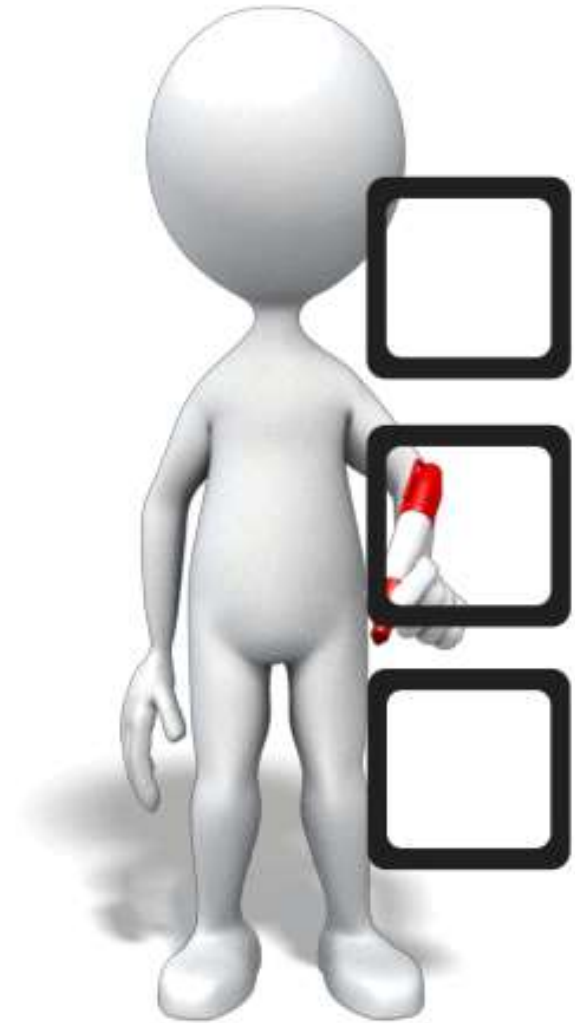
- Easy to search
- Written in plain English
- Replaces the thousands of pieces of previous guidance



# The Programme

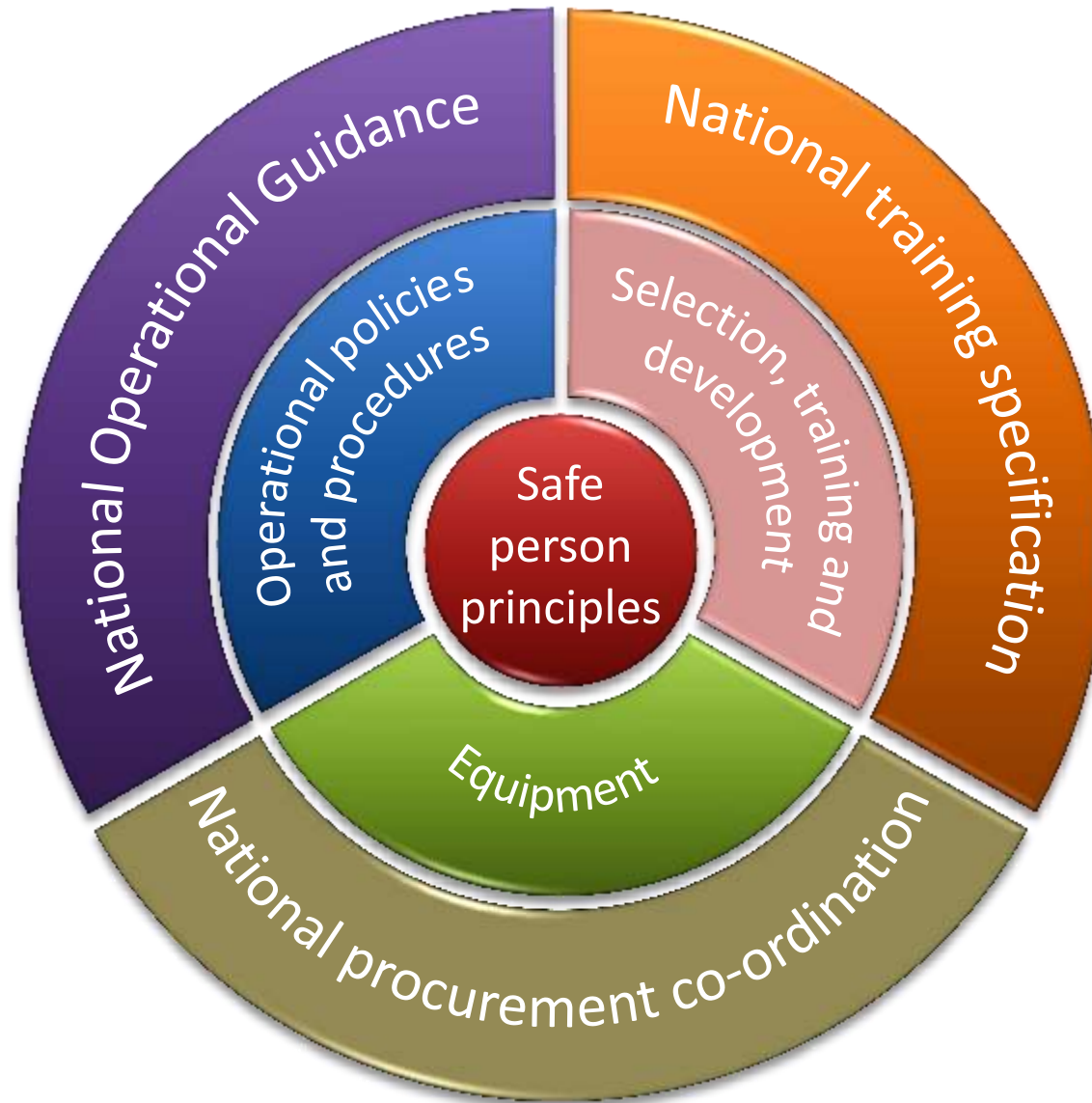
## Progress and the future

- Guidance framework developing well
- Supporting implementation
- Resilience and legacy





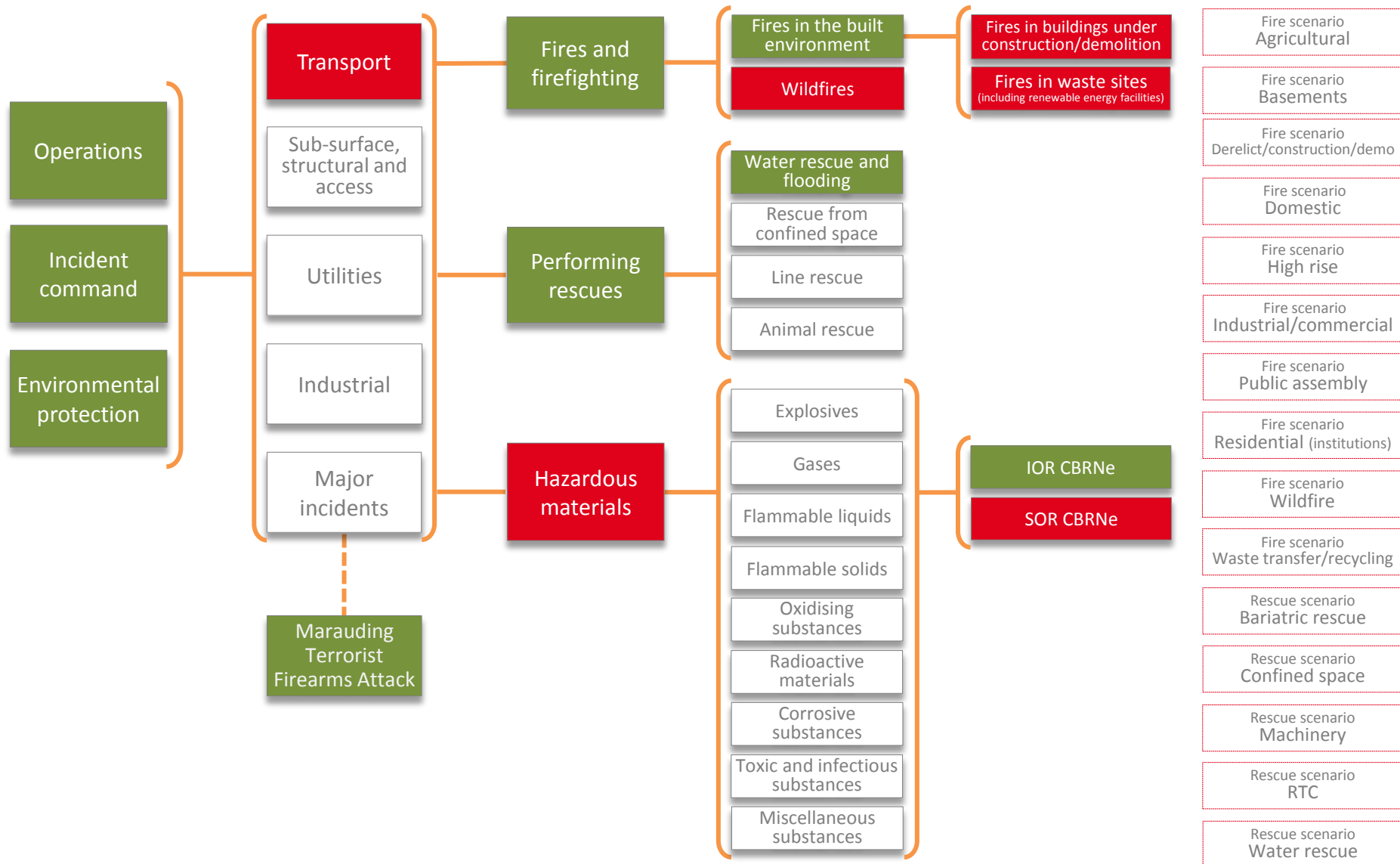
# National guidance function



# NOG framework

## Context

## Scenarios

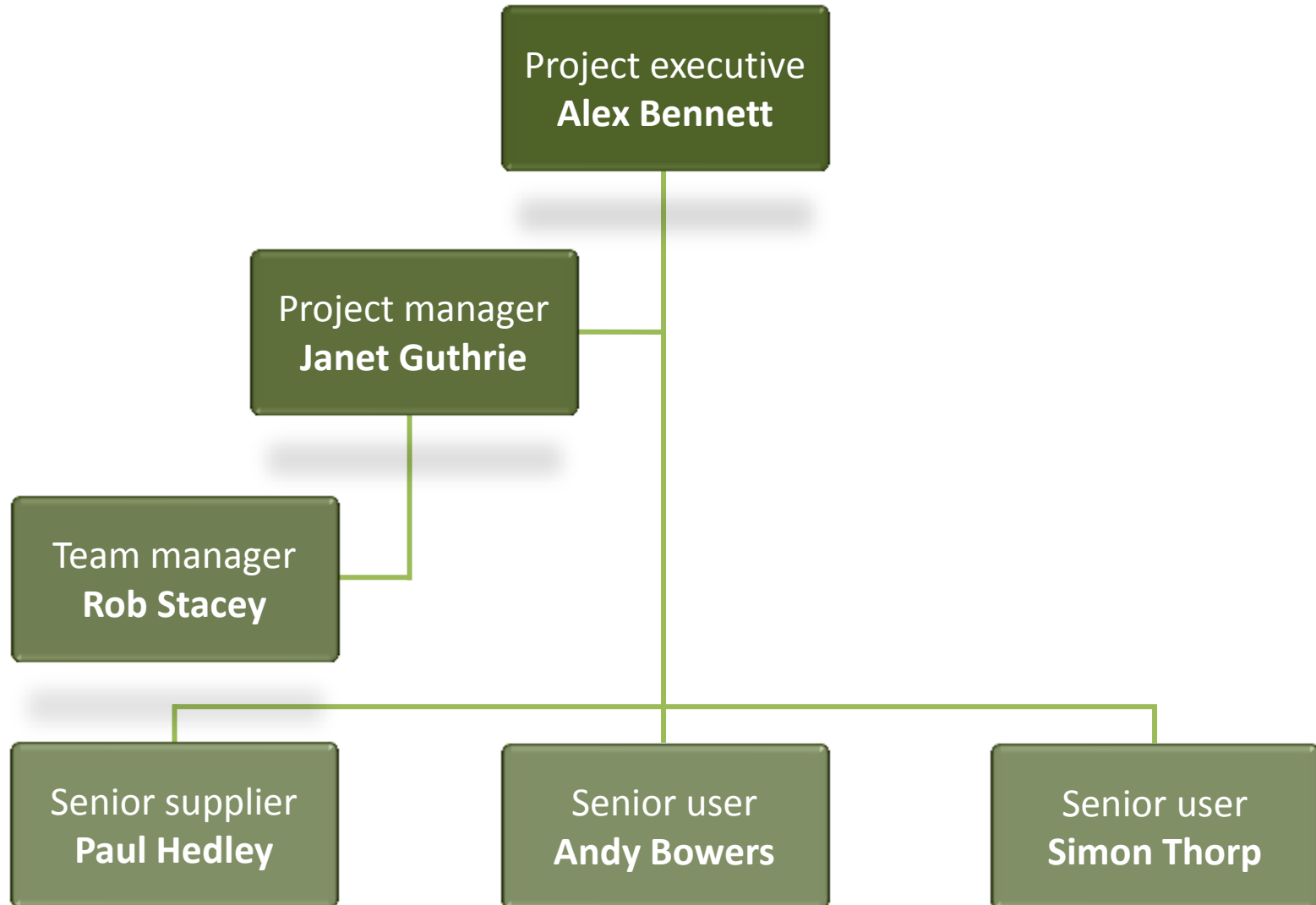


# National Operational Guidance Programme



## **Wildfires guidance**

# Project board



# National Operational Guidance Programme

## Wildfires



# National Operational Guidance Programme



Wildfires

**Rob Stacey**  
Team manager

# Scope of guidance

A wildfire is defined as any uncontrolled vegetation fire which requires a decision or action regarding its suppression, meeting one or more of the following criteria:

- Involves a geographical area of at least one hectare (10,000 square metres)
- Has a sustained flame length of more than 1.5 metres
- Requires a committed resource of at least four fire and rescue service appliances/resources
- Requires resources to be committed for at least six hours
- Presents a serious threat to life, environment, property and infrastructure

# Content of guidance

- Background information about wildfires
- Intraoperability and interoperability
- LACES Safety Protocol
  - Lookouts
  - Awareness
  - Communications
  - Escape Routes
  - Safety zones



# Hazards

- Wildfires (generic)
- Fire behaviour
- Undetected firespread
- Failure to identify and request appropriate resources
- Failure to work safely and effectively with others and their vehicles and equipment
- Scene of operations and terrain
- Physiological hazards
- Moving, using and entrapment of vehicles
- Presence of people
- Presence of animals
- Inappropriate or uncontrolled use of aircraft
- Environmental impact

# Peer review

- British Animal Rescue and Trauma Care Association (BARTA)
- Dorset fire and rescue
- Environment Agency
- Greater Manchester FRS
- Hampshire FRS
- Hereford and Worcester FRS
- Manchester University
- Mid and West Wales FRS
- Mourne Mountains Heritage Trust
- National Health Service Foundation Trust
- National Resilience - Capability Lead
- Natural England
- Natural Resources Wales
- North Yorkshire FRS
- Northumberland FRS
- Northumberland National Park Authority
- Peak District Fire Operations Group
- Public Health England
- Scottish FRS
- South Wales FRS

# National Operational Guidance Programme



Wildfires

**David Hodge**

Work package leader

# Work package leaders

- 12 key contributors to the guidance
- Volunteered due to knowledge and experience of wildfires
- Representatives from around the UK:
  - Working with different hazards
  - Working in different landscapes/vegetation types
- Supported by colleagues within own FRS

# Hazards from aircraft

- Fixed wing aircraft
- Rotary wing aircraft (helicopters)
- Unmanned aircraft systems
- Looks at aircraft from two key perspectives:
  - Aircraft that are present to assist
  - Aircraft that may be there for other reasons:
    - Commercial aircraft
    - Private aircraft
    - Military aircraft etc.

# Hazards from aircraft

- Potential uses and benefits of aircraft:
  - Aerial observation
  - Aerial attack
  - Moving equipment and personnel
- Importance of controlling hazards associated with aircraft:
  - How to manage aircraft to maintain safety of all resources, both in the air and on the ground
  - The need for close co-ordination and support between ground and aerial resources

# National Operational Guidance Programme



Wildfires

**Alex Bennett**

Project executive

# Consultation

- Publish final guidance in April 2016
- Currently out for consultation
- Let us know what you think – everyone is invited to contribute to the open consultation

Consultation finishes  
Tuesday 22<sup>nd</sup> December

December 2015						
M	T	W	T	F	S	S
	1	2	3	4	5	6
7	8	9	10	11	12	13
14	15	16	17	18	19	20
21	<b>22</b>	23	24	25	26	27
28	29	30	31			



# ukfrs.com and SurveyMonkey.com

National Operational  
Guidance Programme

HOME

GUIDANCE

PROGRAMME

INTEROPERABILITY

CONTACT US



Search

Stay Informed

Workshops for guidance  
about fires and firefighting  
01 September 2014

Consultations and Projects

Live consultations

The programme is now consult  
close on **25 August 2014**, w  
you would like to take part i  
guidance carefully be



SurveyMonkey®

# National Operational Guidance Programme

